

Getting connected

Door communication and access control
in the IP network



Door communication and access control in the IP network

Siedle links IP networks with building communication and access control. Efficient interfaces establish the connection and combine the strengths of both installation worlds.

Benefits of the interfaces

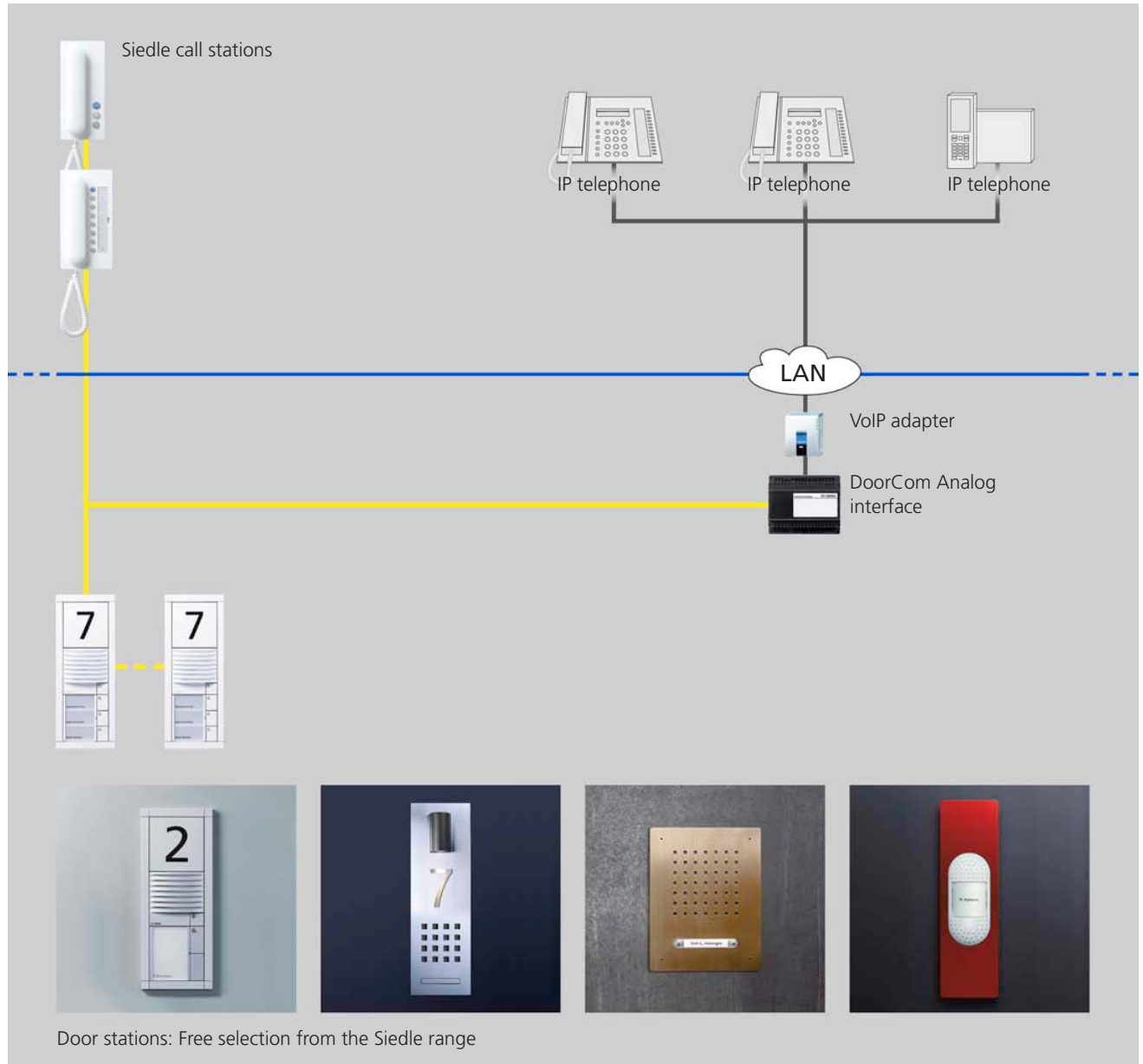
- Flexible utilization and combination of existing infrastructure (IP network, TC system, bell or intercom system)
- Simple installation and integration into the network
- Network-independent fail-safe parallel installation possible for safety-relevant functions
- No compromise in terms of reproduction and transmission performance (synchronous audio link and fluid video stream)
- Proven, efficient technology
- Unrestricted selection from the entire Siedle system world
- All functions in the entrance are a part of one cohesive system: including letterbox, lighting, orientation or access control
- Large design variety and prize-winning design

Application examples

- The TC system is converted to IP, the data network extended - existing door stations are integrated without problems.
- PCs and VoIP telephones can be used for door communication.
- Safety-relevant video monitoring and door release work reliably even in the event of an IP network failure or overload.
- During working hours, the video signals of the door camera are received at the PC workstation - after office hours they are rerouted to a video call station at the switchboard.
- An access control system is set up across several sites and remotely maintained.
- Stringent demands in terms of performance and function are matched by equally exacting aspirations of sophisticated design in the entrance area.

Audio door communication

Connection to the TC system



The DoorCom Analog interface connects the Siedle door and in-house communication with public network telephony.

The interface is connected at a standardized a/b port of the TC system. In the case of VoIP systems without analogue a/b port, the connection is established by a customary ATA VoIP adapter.

A list of tested adapters with configuration instructions is available in the Professional/Download area of the Siedle website www.siedle.de.

DoorCom Analog is not a conventional post amplifier unit which only transmits bell and audio signals, but a fully valid interface to the Siedle system world. This allows for instance

connection of a code lock or a call display.

Functions

- Selective calls to up to 31 users
- Chain, group and collective calls*
- Call rerouting (PBX extension, public network phone, mobile phone, concierge, switching from door intercom to telephone mode)
- Door release, light and up to 6 control functions using DTMF
- Selective dialling of up to 3 door loudspeakers
- PIN protection activation capability
- Call differentiation between door calls and calls via call inputs

- Adjustable ring and call duration
- Time-controlled activation of Doormatic, call rerouting, day/night switching etc.*
- Convenient PC-based configuration*

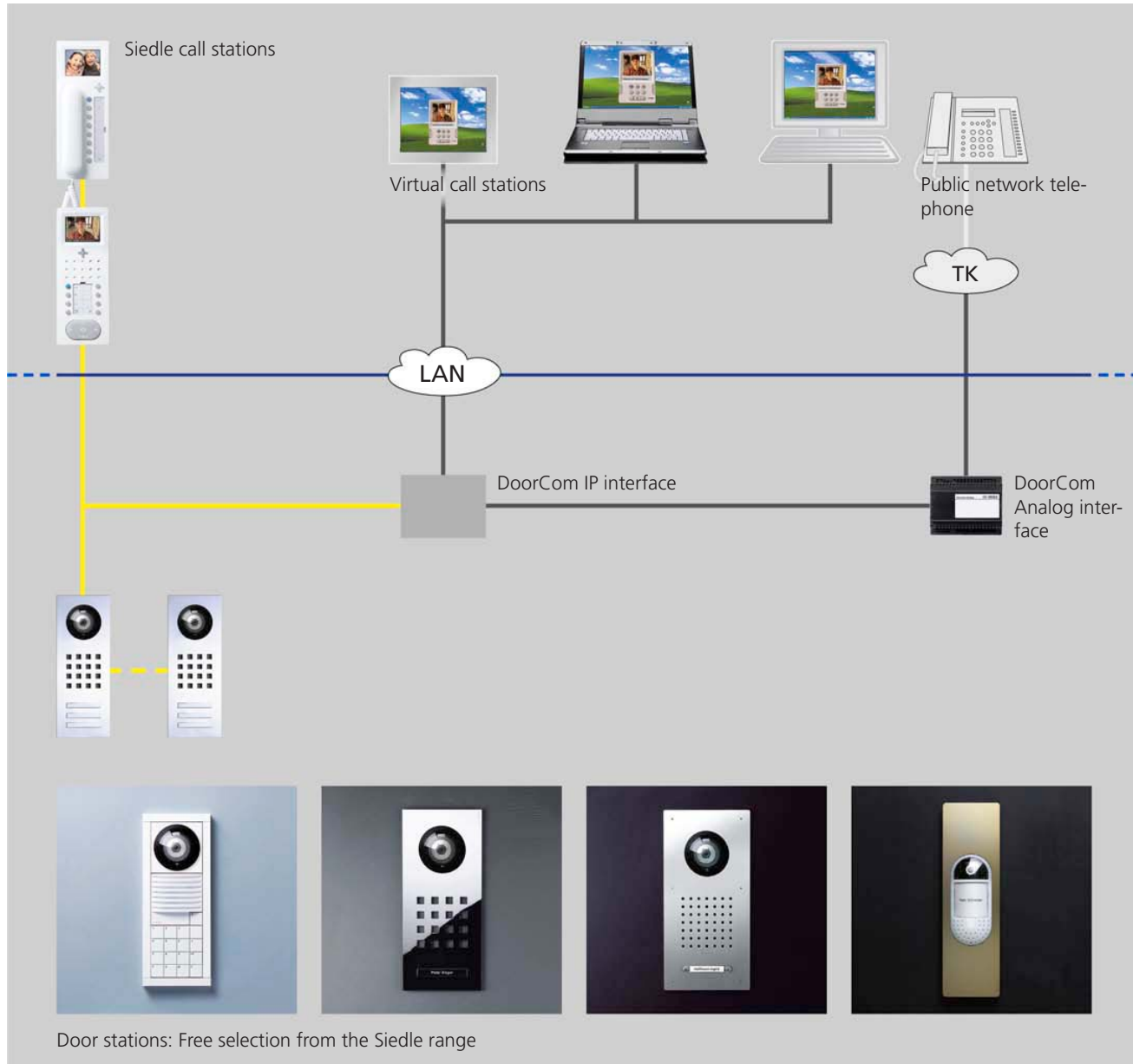
* dependent upon the system configuration

Available for the Siedle In-Home bus, 1+n and Siedle Multi.

Complete overview of functions, specifications and product list:
Siedle Order Catalogue page 289 ff (1+n and In-Home bus) and 266 (Siedle Multi)

Video door communication

Connection to the PC network



DoorCom IP transforms the Ethernet into a transmission path for door communication and the PC into a call station. The door station feeds its call, audio and video signals via the DoorCom IP to the network. At PC workstations, they are received and depicted by the virtual call station, an especially developed software client. The computer assumes all the functions of an indoor call station including video transmission, picture control and switching functions. The speech contact can take place either using the audio equipment of the PC or the telephone. Additional Siedle call stations can also be added at any time. Because DoorCom-IP is both

flexible and scalable. In a mixed-use building, for instance, a doctor's surgery or lawyer's chambers can fulfil all their door communication needs using the PC and software, while the residential apartments are still fitted with classic in-house telephones. And in the home office, the video image is displayed at the PC while the public network telephone assumes the speech contact.

Functions

- Selective calls to up to 49 users*
- Parallel calls possible to max. 25 users*
- Selective dialling of all door stations or indoor call stations

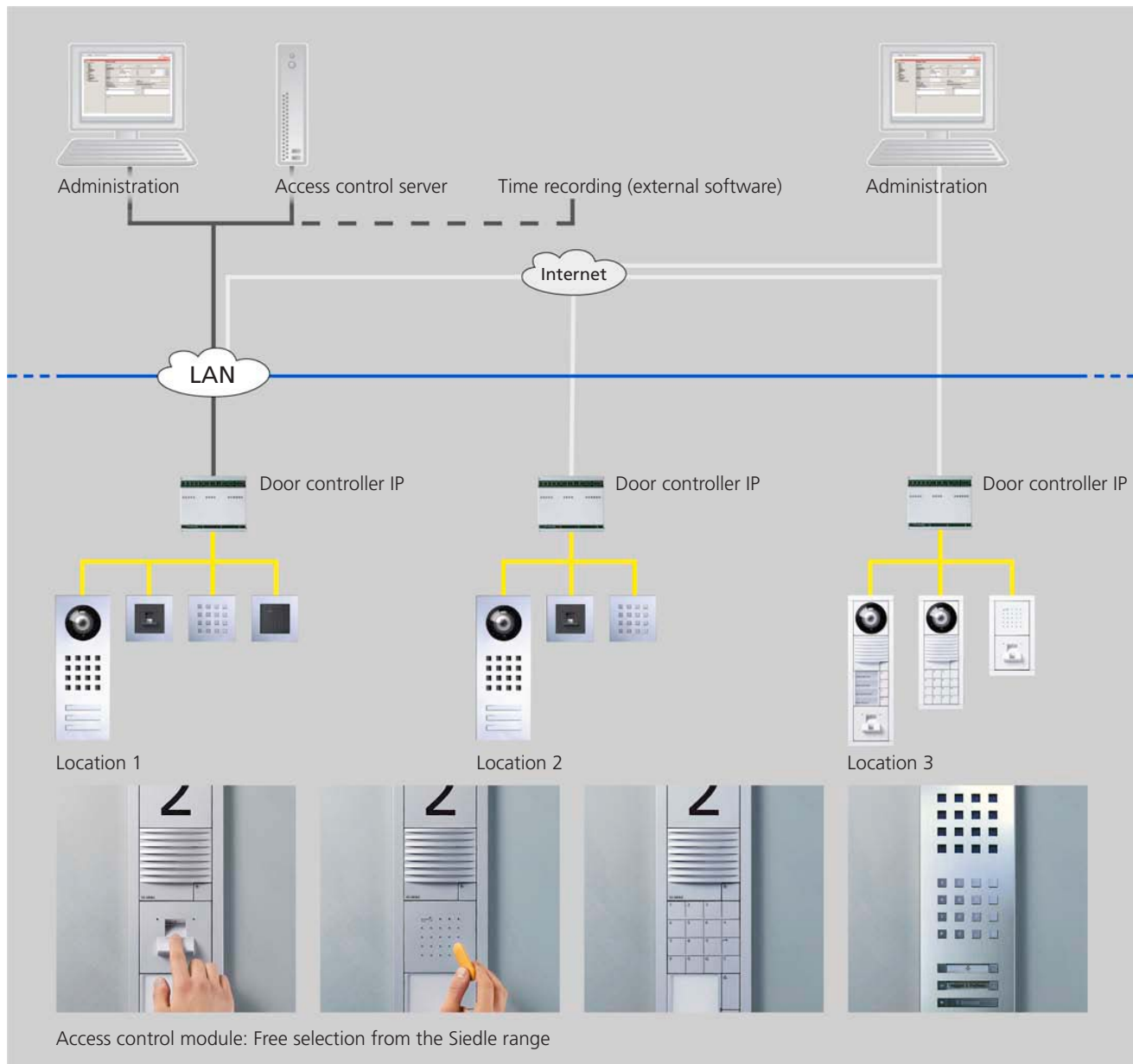
- Call identification by means of plain text display
- Speech connection in full duplex mode
- Optional speech connection via the public network telephone (also VoIP)
- Siedle design software client permitting intuitive operation
- Call control, door release and light actuation by mouse click
- Execution of up to 100 switching and control functions
- Up to 100 text messages
- Control of mechanical cameras possible
- Adjustable call and speech volume
- Convenient PC-based configuration
- High security level due to password protection

* dependent upon the system configuration

Available for the Siedle In-Home bus, Siedle Multi and as a pure IP installation without Siedle intercom system
Complete overview of functions, specifications and product list:
 Siedle Order Catalogue page 296 (In-Home bus), page 300 (Siedle Multi) and page 298 (system-free link)

Access control

Location independent administration
via LAN and the Internet



The door controller IP upgrades the functionality of Siedle access control, extending its suitability to professional security applications. The Ethernet interface and integrated Webserver make this a universally applicable system. And with the server software which interlinks several door controllers, several locations can be linked and jointly managed - even by remote accessing over the Internet. Using the server mode, there are practically no longer any restrictions in terms of the number of locations, entrances, users, time profiles or the event memory. For areas involving stringent security restrictions, several access control systems may be

used in combination, for example fingerprint recognition as well as a code or card. The door controller IP manages the fingerprint recognition system Siedle Fingerprint, the Electronic Key transponder system and the numerical code lock, also in hybrid configurations.

Functions

- Central management of (internationally) widespread locations
- Operating system-independent through the web server
- Up to 1000 persons with access entitlement
- Free allocation of access rights and times
- Investment security: Update

capability, upgrade and extension capability

- Combination of several identification modes
- Maximum security level: e.g. through door release and sabotage monitoring, event memory, anti-passback function
- Simple operation of barrier-free entrance points with access control (additional opening hours)
- Link to time recording software by means of open database interface
- Facility for local and/or remote administration

Complete overview of functions, specifications and product list:

Siedle Order Catalogue page 185 ff
Purchase only through Siedle system integrators, information and advice from Siedle project sales:
projektvertrieb@siedle.de
+49 7723 63-0

Getting connected

Find out more: www.siedle.com

SSS SIEDLE

S.Siedle & Söhne

Postfach 1155
78113 Furtwangen

Bregstraße 1
78120 Furtwangen

Telefon +49 7723 63-0
Telefax +49 7723 63-300
www.siedle.de
info@siedle.de

Quality certification
to DIN EN ISO 9001:2000

Environmental certification
to DIN EN ISO 14001:2005

Member of



Rat für Formgebung
German Design Council



Stiftung
OlympiaNachwuchs
Baden-Württemberg